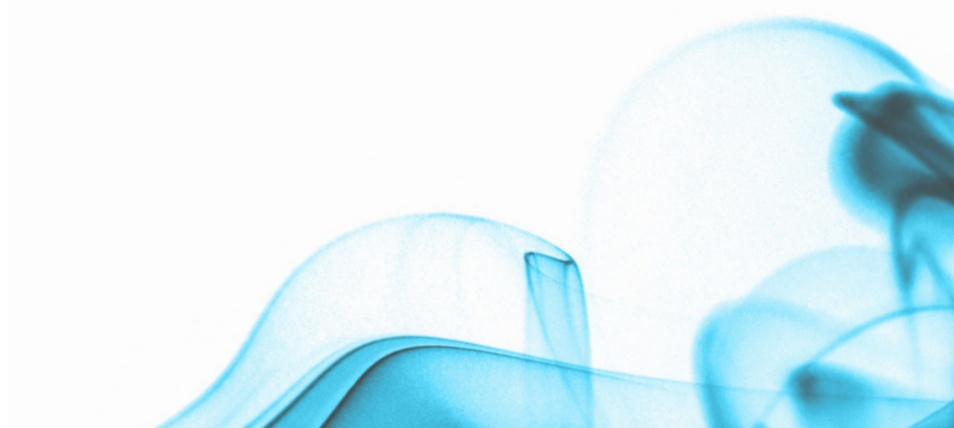


Accessories

Microtector II G460

DESCRIPTION	ARTICLE NO.
Alkaline battery pack , incl. 2 batteries	0
Alkaline battery pack with vibrator, incl. 2 batteries	1
NiMH-II battery pack with explosio-proof lights	2
NiMH-II battery pack with explosion-proof lights and vibrator	3
NiMH-II battery pack	4
NiMH-II battery pack with vibrator	5
NiMH battery pack	1460206
NiMH battery pack with explosion-proof lights	1460208
NiMH battery pack with vibrator	1460207
NiMH battery pack with explosion-proof lights and vibrator	1460209
Alkaline battery pack , incl. 2 batteries	1450201
Alkaline battery pack with vibrator, incl. 2 batteries	1450203
Smart Charger Cap (for charging, calibration and data transfer to a PC)	1450215
Euro-plug-in charger for NiMH-II battery pack	1450216
US-plug-in charger for NiMH-II battery pack	1450217
Vehicle charging cable for 12/24V DC on-board power supply (to permanent positive)	1450227
Drop-in charger DIC1B for devices without pump, with bracket (charging and data transfer to a PC)	1450220
Drop-in charger DIC1B for devices with pump, with bracket (charging and data transfer to a PC)	1450224
Charging set 1: Smart Charger Cap and Euro-plug-in charger	1450240
Charging set 2: Smart Charger Cap and US-plug-in charger	1450241
Charging set 3: Smart Charger Cap and vehicle charging cable	1450242
Charging set 4: Drop-in charger DIC1B with bracket and Euro-plug-in charger	1450246
Charging set 5: Drop-in charger DIC1B with bracket and US-plug-in charger	1450247



Accessories

Microtector II G460

DESCRIPTION	ARTICLE NO.
Charging set 6: Drop-in charger DIC1B with bracket and vehicle charging cable	1450248
Charging set 7: Drop-in charger DIC2B with bracket and Euro-plug-in charger	1450263
Charging set 8: Drop-in charger DIC2B with bracket and US-plug-in charger	1450264
Charging set 9: Drop-in charger DIC2B with bracket and vehicle charging cable	1450265
Data logger set 1: Data logger and software	1450233
Data logger set 2: Data logger, software and USB-cable	1450234
Data logger set 3: Data logger, software, USB-cable and smart charger cap	1450235
Data logger set 4: Data logger, software, USB-cable and drop-in charger DIC1B	1450237
Data logger set 5: Data logger, software, USB-cable and drop-in charger DIC2B	1450239
Micro-SD card , for long-term storage of measurement values (only in combination with a data logger)	1460200
Software-Update for gas detector Microtector II G460	1450230
USB-cable (for PC)	1450232
Smart Cap (for calibration)	1450225
Steel belt clip with adaptor (alternative to crocodile clip)	1450222
Protective bag for devices without display cover and without straps, for Microtector II G450/G460 without pump	1450228
Protective bag for devices with display cover and with straps, for Microtector II G450/G460 without pump	1450266
Protective bag for devices with display cover and straps, for Microtector II G450/G460 with pump	1450269



Accessories

Microtector II G460

DESCRIPTION	ARTICLE NO.
Transportation and storing case	1450229
Attachable motorized pump with hose adapter, 30 cm sampling tube and alkaline battery pack with 2 batteries	1450252
Attachable motorized pump with hose adapter, 30 cm sampling tube and rechargeable battery pack	1450253
Teststation TS400 Set 1 for G450 / G460 without pump, without charging function, incl. fitting, configuration software	1450421
Teststation TS400 Set 2 for G450 / G460 with pump, without charging function, incl. fitting, configuration software	1450422
Teststation TS400 Set 3 for G450 / G460 without pump, with charging function*, incl. fitting, configuration software	1450423
Teststation TS400 Set 4 for G450 / G460 with pump, with charging function*, incl. fitting, configuration software	1450424
Teststation TX400 Set 1 for Microtector II without pump, without charging function, incl. fitting, configuration software	1450441
Teststation TX400 Set 2 for Microtector II with pump, without charging function, incl. fitting, configuration software	1450442
Teststation TX400 Set 3 for Microtector II without pump, with charging function*, incl. fitting, configuration software	1450443
Teststation TX400 Set 4 for Microtector II with pump, with charging function*, incl. fitting, configuration software	1450444
Docking station DS400 for G450, G460 with tray DIC1D for instruments without pump, incl. power supply, memory card, data interface cable to PC (USB to RS485) and configuration software	1450401
Docking station DS400 for G450, G460 with tray DIC2D for instruments with pump, incl. power supply, memory card, data interface cable to PC (USB to RS485) and configuration software	1450402
Docking station DS404 for G450/G460 with tray DIC1D for instruments without pump, incl. power supply, memory card, data interface cable to PC (USB to RS485) and configuration software	1450411
Docking station DS404 for G450/G460 with tray DIC2D for instruments with pump, incl. power supply, memory card, data interface cable to PC (USB to RS485) and configuration software	1450412

